



## Scholar Spotlight: Northeast Ohio SSN Leadership Team

MAY 12, 2019

This week's Scholar Spotlight highlights the [Northeast Ohio SSN](#) leadership team for their work to combat source of income discrimination in Ohio's housing market. Upon request from a state representative, chapter leaders Joseph Mead, Megan Hatch, and J. Rosie Tighe with grad fellow Kristi Andrasik prepared a [policy brief](#), outlining the scope of renter discrimination in Ohio and its disproportionate impact on marginalized populations such as women and African Americans. Read more about the issue in their [Shelterforce OpEd](#). This effort led to the filing of [House Bill 229](#), which would prohibit landlords from discriminating against renters who use federal housing vouchers to help pay their rent. This week, the bill was officially referred to the Ohio House Committee on Commerce and Labor, where it is now being discussed. Please congratulate these leaders on their excellent work.

### Scholar Spotlight

#### JOSEPH W. MEAD

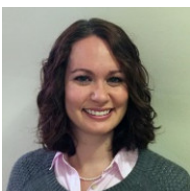
Georgetown University



Mead researches the law of civil society, with a focus on volunteerism, free speech, and policy issues faced by small to medium-sized charities. He is also interested in the legal rights of the poor, particularly in the context of criminalization of the homelessness. His work has directly influenced policy at the federal and local levels.

#### MEGAN E. HATCH

Cleveland State University



Hatch's research explores the causes and consequences of social policies that disproportionately affect vulnerable populations.

#### J. ROSIE TIGHE

Cleveland State University



Tighe's research focuses on housing policy, race and ethnicity, and neighborhood revitalization.

## **KRISTI ANDRASIK**

The Cleveland Foundation



Andrasik is a licensed independent social worker and urban studies doctoral student interested in issues of social equity, specifically at the intersection of lived experience, service delivery/implementation, philanthropy, and public policy.