



2020 Presidential Candidate Debates: Issues Explained by Experts

JUNE 13, 2019

Dominik Doemer

With the debates on June 26th and 27th, the 2020 presidential election officially enters a new stage. As you prepare for your coverage of the debates and resulting policy discussions, the following scholars are available and prepared to comment on the following topics:

- [Border Security and Immigration](#)
- [Criminal Justice Reform](#)
- [Green New Deal](#)
- [Gun Control](#)
- [Health Care](#)
- [Money in Politics](#)
- [Student Debt](#)

Border Security and Immigration

ELADIO BOBADILLA

University of Pittsburgh



Expert on the history of the modern immigrants' rights movement.

ERNESTO CASTAÑEDA

American University



Expert on the political inclusion of immigrants and minorities, the US-Mexico border, and the link between migration and mental health.

RENÉ D. FLORES

University of Chicago



Expert on international migration, race and ethnicity, and social stratification.

ANGELA S. GARCÍA

University of Chicago



Expert on international migration, law and society, race and ethnicity, Latino/a sociology, and political sociology.

TANYA GOLASH-BOZA

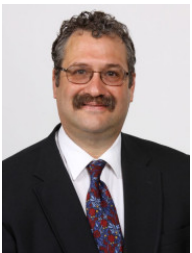
University of California-Merced



Expert on the social consequences of immigration policy, with a focus on deportations.

JOSIAH M. HEYMAN

The University of Texas at El Paso



Expert on border security, immigration law enforcement, and attendant human rights issues.

TIFFANY D. JOSEPH

Northeastern University



Expert on how contemporary immigration is changing U.S. racial dynamics particularly with regard to racial classification and interracial relations.

S. DEBORAH KANG

University of Virginia-Main Campus



Expert on immigration law enforcement in the United States with a particular focus on the nation's northern and southern borders.

ANNA ON YA LAW

CUNY Brooklyn College



Expert on the interaction between law, legal institutions, and politics. Her substantive areas of expertise are in U.S. immigration and constitutional law, policy, and history.

CAITLIN PATLER

University of California, Davis



Expert on citizenship, legal status, and opportunities for mobility.

ARIELA SCHACHTER

Washington University in St. Louis



Expert on the integration of immigrants in the United States and the implications of immigrant-native relations for inequality and group politics.

JOHN D. SKRENTNY

University of California-San Diego



Expert on political and legal issues regarding immigration, civil rights, jobs and equal opportunity.

TOM K. WONG

University of California, San Diego



Expert on politics of immigration, citizenship, and migrant "illegality."

Criminal Justice Reform

IAN T. ADAMS

University of South Carolina



Expert on the effects of body-worn cameras in policing, particularly the unforeseen impact on vulnerable victim populations as well as on police officers themselves.

ALEXES HARRIS

University of Washington-Seattle Campus



Expert on juvenile justice as well as the fines and fees that people who make contact with all levels of U.S. systems of justice are charged upon citation or conviction.

CHAD POSICK

Georgia Southern University



Expert on the intersection of violent behavior and victimization, the developmental outcomes associated with trauma and abuse, and violence prevention.

DOUGLAS AARON BERMAN

The Ohio State University



Expert on criminal justice reform surrounding marijuana convictions.

KATHERINE BECKETT

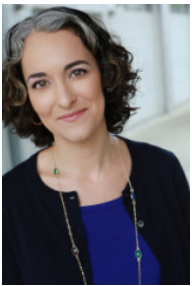
University of Washington-Seattle Campus



Expert on death penalty reform and the causes and consequences of the expansion of the U.S. criminal justice system. She also studies racial disproportionality in the criminal justice system, the assessment and consequences of legal financial obligations, urban social control, drug policy, and capital punishment.

KERAMET REITER

University of California-Irvine



Expert on prisons, prisoners' rights, and the impact of prison and punishment policy on individuals, communities, and legal systems. Her research has examined medical experimentation on prisoners, record-clearing programs, gun control laws, and the use of long-term solitary confinement in the United States and internationally.

KEVIN H. WOZNIAK

Maynooth University



Expert on the politics of punishment and criminal justice with a particular focus on public opinion.

KIMYA NURU DENNIS



Expert on interdisciplinary approaches to mental health, community violence, Crisis Intervention Training (CIT) for law enforcement, and race and ethnic relations.

MICHAEL SIERRA-ARÉVALO

University of Texas at Austin



Expert on policing in the United States, gangs, firearms, social networks, and violence prevention.

MICHELLE SUZANNE PHELPS

University of Minnesota-Twin Cities



Expert on criminal justice policies, practices, and institutions in the United States over the past half-century, including penal change, mass probation, and policing.

NAZGOL GHANDNOOSH

The Sentencing Project



Expert on parole, racial disparities in criminal justice outcomes, and the dramatic reductions in New York, New Jersey, and California's prison populations.

SARA WAKEFIELD

Rutgers University



Expert on the consequences of the prison boom for families, with an emphasis on childhood well-being and family functioning.

Green New Deal

TERRI FRIEDLINE

University of Michigan



Expert on system reform and consumer protections to ensure that households and communities have access to safe and affordable financial products and services.

MATTO MILDENBERGER

University of California, Santa Barbara



Expert on climate policy inaction in the face of dramatic economic and social costs associated with the climate crisis.

ANDREW PATTISON

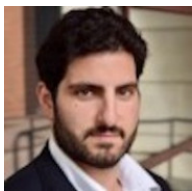
Colgate University



Expert on environmental and public policy, subnational sustainability and climate action planning, climate and energy politics, policy process theories, the role of science and technical information in policymaking, and issues of urban social equity.

MARK PAUL

New College of Florida



Expert on inequality by race, class and gender, and sustainable economics.

EMILY DIAMOND

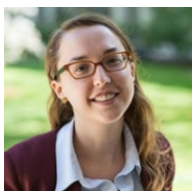
University of Rhode Island



Expert on climate change policy, identity politics, and climate change communications.

LEAH C. STOKES

University of California, Santa Barbara

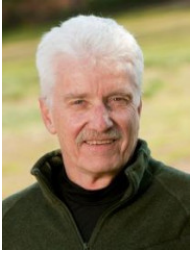


Expert on public policy and environmental politics, with a focus on environmental and energy policies in the United States and Canada.

Gun Control

PHILIP J. COOK

Duke University



Expert on violence prevention (with a particular focus on firearms), criminal justice policy and crime prevention.

KRISTIN ANNE GOSS

Duke University



Expert on the role of social movements and interest groups in representing less-advantaged groups in gun policy.

ANDREW V. PAPACHRISTOS

Northwestern University



Expert on urban neighborhoods, street gangs, violent crime, gun violence, and social networks.

KERRI M. RAISSIAN

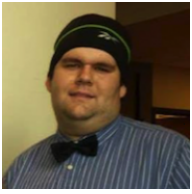
University of Connecticut



Expert on the effect of policy on family violence and gun violence prevention

JACOB SMITH

Duke University



Expert on how different public policies relate to varied outcomes, particularly those affecting the number of gun deaths in the American states.

Health Care

SAMUEL L. DICKMAN

Primary Care, Planned Parenthood South Texas



Expert on disparities in access to care, prisoner health, substance abuse, and HIV/AIDS.

JOE M. FEINGLASS

Northwestern University



Expert on health policy, quality improvement, health disparities, medical informatics, patient safety, and social epidemiology research.

COLLEEN M. GROGAN

University of Chicago



Expert on health policy and politics, patient and consumer participation in health policymaking, and the American welfare state.

JONATHAN GRUBER

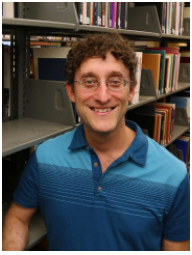
Massachusetts Institute of Technology



Served as a technical consultant to the Obama Administration and worked with both the Administration and Congress to help craft the Patient Protection and Affordable Care Act.

JONATHAN OBERLANDER

University of North Carolina at Chapel Hill



Expert on U.S. health care policy, the politics of health care reform, and Medicare.

BENJAMIN D. SOMMERS

Harvard School of Public Health



Expert on health coverage and access to care, especially for low-income Americans.

Money in Politics

ADAM BONICA

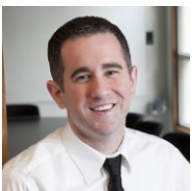
Stanford University



Expert on ideology, campaign finance and interest groups politics.

NICHOLAS CARNES

Duke University



Expert on the influence of legislators' backgrounds on economic policy and inequalities of social class.

JEN A. HEERWIG

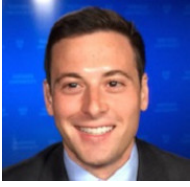
Stony Brook University



Expert on America's campaign finance system and political inequality.

ALEXANDER W. HERTEL-FERNANDEZ

Columbia University



Expert on party politics and dark money.

JOSHUA L. KALLA

Yale University



Expert on the role of donor access and money on voter persuasion.

MICHAEL J. MALBIN

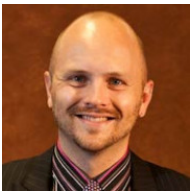
SUNY at Albany



Expert on money in politics in federal and state elections.

MICHAEL G. MILLER

Barnard College



Expert on campaign finance, election administration, and voting behavior.

STAN NGUYEN OKLOBZIJA

Tulane University



Expert on campaign finance law and money in politics in both state and federal elections.

DOUGLAS M. SPENCER

University of Colorado Boulder



Expert on campaign finance, voting rights, and election administration cases in the courts.

CIARA TORRES-SPELLISCY

Stetson University College of Law



Expert on money in politics, strengthening election laws, and improving corporate governance.

CHRISTOPHER WITKO

Pennsylvania State University-Main Campus



Expert on interest group influence in the policy process, money in politics, and the politics of income inequality.

Student Debt

FENABA R. ADDO

University of North Carolina at Chapel Hill



Expert on the intersection of family economics and social demography, including the role of education loans and credit card debt on early union formation and racial wealth differences in student loan repayment.

CHARLIE EATON

University of California, Merced



Expert on tuition reform in public universities. Eaton's research examines relationships between financialization and growing inequalities in U.S. higher education.

DONALD E. HELLER

University of San Francisco



Expert on rising tuition and college access, choice, and success for low-income and minority students.

JASON HOULE

Dartmouth College



Expert on rising debt and social inequality, as well as how debt and the Great Recession are linked to population health and mental health.

JAMAL MAZYCK

San Francisco State University



Expert on minority student matriculation in higher education and postsecondary campus climate issues related to students of color.

SHERICE JANAYE NELSON

Southern University



Expert on America's Historically Black Colleges and Universities.

LAURA W. PERNA

University of Pennsylvania



Expert on the student debt crisis and identifying how social structures, educational practices, and public policies can promote college access and attainment, particularly for groups that continue to be underrepresented in higher education.