



## 5 Experts Available for Timely Analysis on Immigration Debate

MAY 11, 2023

Mandana Mohsenzadegan

The immigration debate has taken center stage in Washington DC yet again: the Trump-era health order known as [Title 42](#) — which allowed US border officials to turn migrants back to Mexico or their home countries immediately because of the pandemic — is set to expire at midnight. Meanwhile, today House Republicans are expected to pass an immigration bill that would require construction of the U.S.-Mexico border wall to resume.

For reporters covering these developments and what they mean for immigration, the following researchers are available.

### ERNESTO CASTANEDA

American University



Castañeda is the founding director of the Immigration Lab. He is also the author of several books, including [Building Walls: Excluding Latin People in the United States](#). He has written for The Washington Post, Los Angeles Times, The Chicago Tribune, The Hill, CityLab, and is a frequent guest on France24, Telemundo, Univision, and NTN24. He has two forthcoming books on immigration myths and Central American unaccompanied children.

### JOSIAH M. HEYMAN

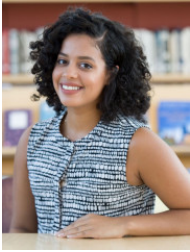
The University of Texas at El Paso



Last year Heyman chaired the American Anthropological Association's task force on border walls, whose report can be found [here](#). He is the author of numerous accessible public essays as well as academic works, including one publication [relevant to preventing entry at the border](#). His latest published book is [Paper Trails: Migrants, Documents, and Legal Insecurity](#).

## YALIDY MATOS

Rutgers University-New Brunswick



Matos' research interests include racial and ethnic politics, public opinion and behavior, and immigration policy. Her work has been featured in the *American Behavioral Scientist*; the *Association of Mexican American Educators (AMAE) Journal*; *Labor: Studies in Working-Class History*; *Perspectives on Politics*; *Politics, Groups, and Identities*; and *Political Research Quarterly*.

## MARGATH A. WALKER

University of Louisville



Walker is a geographer whose research focuses on borders, security, and US-Mexico. She has worked with community organizations on the U.S.-Mexico border supporting economic and racial justice.

## SOPHIA JORDÁN WALLACE

University of Washington-Seattle Campus



Wallace's research focuses on Latino politics, immigration politics and policy, and legislative politics. Her most recently published book is [Walls, Cages, and Family Separation: Race and Immigration Policy in the Trump Era](#). She is currently working on a book project that examines the framing of immigration politics and policy in Congress and the conditions under which immigration legislation moves forward or stalls.