



**2017 REGIONAL
LEADERSHIP RETREAT**

MAY 4 - 5, 2017
HILTON CHICAGO O'HARE AIRPORT HOTEL
10000 W O'Hare Avenue, Chicago, IL

WELCOME

The Scholars Strategy Network seeks to improve public policy and strengthen democracy by organizing scholars working in America's colleges and universities, and connecting scholars and their research to policymakers, citizens associations, and the media. As a voluntary, federated organization, our strength is our regional chapters, our national working groups, and our member scholars. This leadership meeting is intended to help SSN leaders and partners:

- Build connections
- Reflect on challenges facing public policy and democracy in the United States
- Share best practices for building powerful, active chapters
- Explore opportunities and define next steps for SSN chapters, working groups, and national projects

If you need any assistance during the event, please find any member of the SSN staff or contact Ben Miyamoto at (904) 891-2279.

Welcome to Chicago!

10:30-1:00 pm Optional TV Camera Training for Early Arrivals

Location: Boardrooms 2043 and 2044

12:00-1:30 pm Optional Buffet Lunch

1:30-2:15 pm Welcome and State of the States

2:15-3:00 pm Network Building

3:00-3:30 pm Flash Talks
Organizing Chapters
Recruitment

3:30-4:00 pm Break

4:00-4:45 pm Panel: Public Scholarship in the Trump Years

4:45-5:30 pm One-on-One Meetings

5:30-7:00 pm Free Time & Cocktail Hour
Location: Grand Ballroom

7:00-9:30 pm Dinner
Location: Grand Ballroom

All Thursday events will be held in the International Room unless otherwise noted.

8:00-9:00 am Breakfast

9:00-10:00 am Public Scholars in a Polarized Time

10:00-10:15 am Break

10:15-11:45 am Flash Talks
Public Opinion and Messaging to Elites
Research in the Media
Climate Change
Civic Engagement
Information Brokers

11:45am-12:45 pm Lunch

12:45-1:45 pm Panel: State Partnerships

1:45-2:00 pm Break

2:00-3:00 pm Workshop: Planning for Policy Impact

3:00-3:30 pm The Fight for the Affordable Care Act

3:30-4:00 pm Closing Session

All Friday events will be held in the International Ballroom.

1:30-2:15 pm State of the States**Shifting Terrain**

Theda Skocpol (Harvard University) and Alexander Hertel-Fernandez (Columbia University) will present their research on the investments that the far right has made to build power in the states.

SSN in 2017

Avi Green (Scholars Strategy Network) will give an organizational update and present a framework for thinking about how scholars can use relationships to improve policy and strengthen democracy.

2:15-3:00 pm Network Building

Pao Maynard-Moll (Scholars Strategy Network) will facilitate table-based discussions to help attendees build connections and identify best practices for engaging new scholars and collaborators in SSN.

3:00-3:30 pm Flash Talks

Pao Maynard-Moll will introduce the purpose of the retreat's flash talk sessions and kick off the sessions with a five-minute talk on the importance of identifying leadership roles that active members can take to support leaders and strengthen SSN chapters.

Sarah Reckhow (Michigan State University) will speak about her experiences recruiting members for the emerging Michigan SSN chapter.

Suzanne Mettler (Cornell University) will present on best practices for building and strengthening chapters.

4:00-4:45 pm Public Scholarship in the Trump Years

Vanessa Williamson will discuss her research on Tea Party activism and compare it to current organizing efforts on the left. David desJardins (SSN Steering Committee) will present a strategic perspective on the current political moment and reflect on convening questions for scholars to consider. Paul Lichterman (University of Southern California) will present his research on two common models of organizing. Joseph Anthony (University of Missouri at St. Louis) will discuss the importance of relationship building and the power of one-on-one meetings.

9:00-10:00 am Public Scholars in a Polarized Time

Lizzy Ghedi-Ehrlich (Scholars Strategy Network) and J. Celeste Lay (Tulane University) will facilitate a discussion about public engagement for scholars in a time when seemingly any research can come under attack. The group will identify ways scholars as individuals and SSN as an organization can protect and promote public scholarship.

10:15-11:45 am Flash Talks

Lawrence Jacobs (University of Minnesota) will moderate this series of flash talks that combine updates on chapter success stories with discussions of policy and practice. He will open with a presentation on the limits of public opinion and the importance of communicating with elites.

Amy Fried (University of Maine) will explain how Maine SSN members work with the Bangor Daily News.

Lee Wasserman (Rockefeller Family Fund) will give an update on the politics and policy of climate change in 2017.

Ian Simmons (Blue Haven Initiative) will speak about best practices for encouraging civic engagement by students.

John Skrentny (University of California, San Diego) will describe how the San Diego SSN chapter has become a key resource for a coalition of civic organizations.

Jim Curry (University of Utah) will explain how the Utah SSN chapter is becoming a matchmaker between researchers and policy players.

12:45-1:45 pm Panel: State Partnerships

Carolyn Heinrich will moderate this panel session and open by describing how she developed relationships with a variety of state policy actors to bring research into the debate on education policy in Texas.

Robb Gray and Becca Segal (Center on Budget and Policy Priorities) will discuss ways SSN members and chapters can collaborate with their federated network, the State Priorities Partnership.

Drew Astolfi (Center for Community Change) will talk about how scholars have supported the work of grassroots organizations.

Natasha Perez (Commonwealth of Massachusetts) will describe how scholars can play a role in the policymaking process, drawing on her experience as Chief of Staff to the Massachusetts Senate President.

2:00-3:00 pm Workshop: Planning for Policy Impact

M.V. Lee Badgett (University of Massachusetts Amherst) will lead an interactive group exercise that involves examining the policy landscape, mapping key policy players, and identifying ways to build relationships in order to improve public policy.

3:00-3:30 pm The Fight for the Affordable Care Act

Jacob Hacker (Yale University) will present an overview on the fight for the Affordable Care Act, offer lessons learned from the most recent health care fights, and discuss what comes next.

3:30-4:00 pm Closing Session & Next Steps

Heide Casteñeda (University of South Florida) and Suzanne Mettler (Cornell University) will offer closing thoughts and reflections.

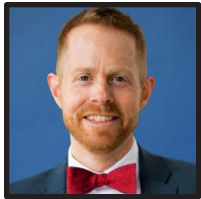
GUEST SPEAKERS



DREW ASTOLFI

Center for Community Change

Drew is senior organizer for the Center for Community Change, an organization dedicated to building the power and capacity of low-income people, especially low-income people of color, to change their communities and public policies for the better.



ROBB GRAY

Center on Budget and Policy Priorities

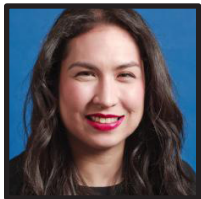
Robb is Director of State Strategies and Engagement at the Center on Budget and Policy Priorities working with State Priorities Partnership organizations and other nonprofit groups. He joined the Center in May 2007. He brings over ten years of experience working in state and federal governments in a variety of government relations, organizational development, and analytical capacities.



NATASHA PEREZ

Office of Massachusetts State Senate President Stanley Rosenberg

Natasha serves as Chief of Staff for Massachusetts State Senate President Stanley Rosenberg. Perez earned a BA in Political Science from the University of Massachusetts Boston and a MS in Project Management at Boston University. She worked as Political Director for AARP Northeast, Chief of Staff at Green Works in Cambridge, and Deputy Director for the Massachusetts Democratic Party. Most recently, Natasha headed her own political communication and strategic planning consulting firm where she worked with organizations including Citizens Energy and the National Committee to Preserve Social Security and Medicare.



BECCA SEGAL

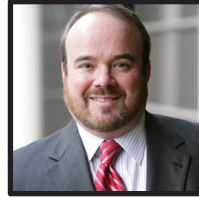
Center on Budget and Policy Priorities

Becca is State Strategies Manager with the State Fiscal Project at the Center on Budget and Policy Priorities. She provides support for State Priorities Partnership organizations' outreach and engagement work. Segal joined the Center in 2014 as the Child Nutrition Associate on the Food Assistance team. In that role, she focused on improving low-income children's access to healthy school meals.

STEERING COMMITTEE



THEDA SKOCPOL, *Director*
Victor S. Thomas Professor
of Government and
Sociology, Harvard
University



LAWRENCE R. JACOBS
Walter F. and Joan Mondale Chair for
Political Studies and Director of the
Center for the Study of Politics and
Governance and the Department of
Political Science, University of
Minnesota



BOB BOWDITCH, *Chair*
Founder and General
Partner, MB
Management



SUZANNE METTLER
Clinton Rossiter Professor of
American Institutions,
Cornell University



DAVID DESJARDINS
Consultant and
Investor



IAN SIMMONS
Co-Founder and Principal
of Blue Haven Initiative,
President of the Foundation
for Civic Leadership



AMY FRIED
Professor of Political
Science, University of
Maine



LEE WASSERMAN
Director and Secretary,
Rockefeller Family Fund



JACOB S. HACKER
Stanley B. Resor Professor
of Political Science and
Director of the
Institution for Social and
Policy Studies, Yale
University

REGIONAL NETWORK REPRESENTATIVES

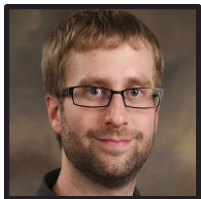
Atlanta



KATE PRIDE BROWN

Assistant Professor of History and Sociology, Georgia Institute of Technology

Brown is sociologist whose research focuses upon power relationships and their impact on the natural world.



CHAD POSICK

Assistant Professor of Criminal Justice and Criminology, Georgia Southern University

Posick's research focuses on the role of emotions in behavior with a particular emphasis on delinquency and criminal justice.

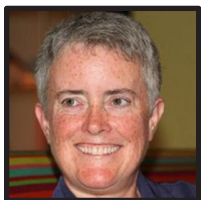
Boston



RANDY ALBELDA

Professor of Economics and Senior Research Associate, University of Massachusetts Boston
@randyalbelda

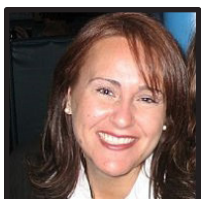
Albelda is a labor economist whose research and teaching cover a broad range of economic policies affecting women and families.



M.V. LEE BADGETT

Professor of Economics, University of Massachusetts, Amherst

Badgett's research interests include labor economics, employment discrimination, economics of sexual orientation, and same-sex marriage.



ERIN O'BRIEN

Associate Professor of Political Science, University of Massachusetts Boston
@Prof_EOB

O'Brien's areas of specialization are poverty politics, campaigning and elections, women and politics, and American public policy.

REGIONAL NETWORK REPRESENTATIVES

Boston



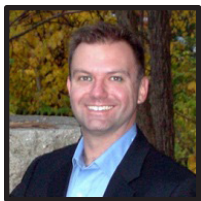
BEN RAILTON

*Professor of English Studies and Coordinator of American Studies,
Fitchburg State University*

@AmericanStudier

Railton is an expert in the histories of immigration and diversity in America.

Central New York



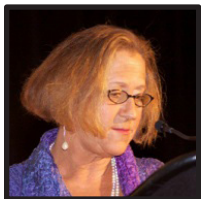
CHRIS FARICY

Assistant Professor of Political Science, Syracuse University

@cgfaricy

Faricy's main area of interest is in the politics of income inequality.

Chicago



BARBARA RISMAN

Professor of Sociology, University of Illinois at Chicago

@bjrisman

Risman's teaching and research focuses on women's status in society, and the changing politics and policies around gender and sexual inequality.

Colorado



WHITNEY DUNCAN

Assistant Professor of Anthropology, University of Northern Colorado

Duncan is a medical and psychological anthropologist whose research focuses on the cultural and socioeconomic dimensions of mental health in global perspective.

REGIONAL NETWORK REPRESENTATIVES

Confluence



JOSEPH ANTHONY

*PhD Student in Political Science, SSN Graduate Fellow 2016-17,
University of Missouri at St. Louis*

Anthony's research interests include elections administration and voting rights, social movements, and political parties.



DAVE ROBERTSON

*Curator's Teaching Professor of Political Science, University of
Missouri-St. Louis
@daverobertsonMO*

Robertson's research and teaching focus on American political institutions and how they affect economic, labor, social, and environmental policy.

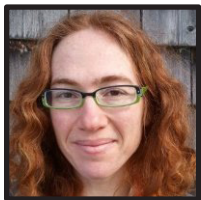
Washington, D.C.



ANTWAN JONES

*Professor of Sociology and Africana Studies, George Washington
University
@AntwanJonesPhD*

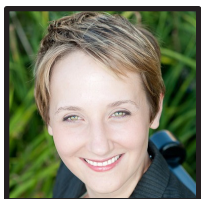
Jones is an expert on inequality, the impact of unequal neighborhoods on health, and the implications of gentrification on community race relations.



EMILY SHAW

*Senior Implementation Advisor, Johns Hopkins University
@emilydshaw*

Shaw is a researcher, writer, and advocate with a passion for state and local government.



VANESSA WILLIAMSON

*Fellow in Governance Studies, Brookings Institution
@V_Williamson*

Williamson's research focuses on the politics of taxation in America.

REGIONAL NETWORK REPRESENTATIVES

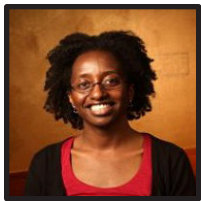
Finger Lakes



SUZANNE METTLER

Clinton Rossiter Professor of American Institutions, Cornell University
@SuzanneMettler1

Mettler's current research investigates changes in U.S. social welfare and educational policies since the 1970s, and probes how policy shifts in the midst of rising economic inequality have influenced American attitudes about government and participation in politics.



JAMILA MICHENER

Assistant professor of Government, Cornell University
@povertyscholar

Michener specializes in the field of American politics, with a focus on the political precursors to and consequences of poverty and racial inequality.



LAURA TACH

Assistant Professor of Policy Analysis and Management, Cornell University

Tach's research examines urban poverty and family life.

Hawaii

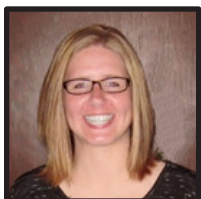


JENNIFER DARRAH

Assistant Professor of Sociology, University of Hawai'i at Manoa

Darrah's research interests include race and ethnicity, urban and community sociology, and housing and land use policy, particularly pertaining to Hawai'i.

Iowa



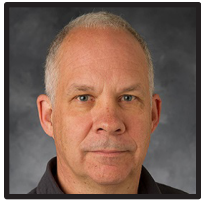
SARAH BRUCH

Assistant Professor of Sociology, University of Iowa

Bruch's research focuses broadly on social stratification and public policy, particularly on integrating theoretical insights from relational and social theorists into the empirical study of inequalities.

REGIONAL NETWORK REPRESENTATIVES

Iowa



COLIN GORDON

Professor of History, University of Iowa
@colingordon6

Gordon is a historian of American public policy, with particular expertise in labor, health and urban policies.

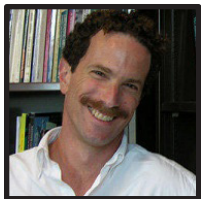
Los Angeles Unified



MARCUS ANTHONY HUNTER

Associate Professor of Sociology, University of California, Los Angeles
@manthonyhunter

With a special focus on black Americans, Hunter's work focuses on urban race relations and politics, sexuality, and gender.

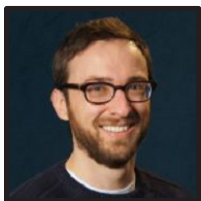


PAUL LICHTERMAN

Professor of Sociology and Religion, University of Southern California

Lichterman studies how and why people get involved in citizen advocacy and volunteering, and the political and civic roles of religious organizations.

Madison



NICK HILLMAN

Associate Professor of Educational Leadership and Policy Analysis, University of Wisconsin-Madison
@n_hillman

Hillman's research explores how states and the federal government finance college education, and how their financing policies affect educational opportunity.

Maine



AMY FRIED

Professor of Political Science, University of Maine

Fried teaches and writes about citizens' political involvements and values, and has examined how polling developed and how polls are used in U.S. politics and society.

REGIONAL NETWORK REPRESENTATIVES

Maine



FLYNN ROSS

Associate Professor of Teacher Education, University of Southern Maine

@FlynnRoss1

Ross studies and speaks about school reform policies.

Michigan



SARAH RECKHOW

Assistant Professor of Political Science, Michigan State University

@SReckhow

Reckhow's research examines education policy and social welfare policy, particularly in urban areas.

Minneapolis - St. Paul



LAWRENCE R. JACOBS

Walter F. and Joan Mondale Chair for Political Studies, University of Minnesota

@larryjacobs

Jacobs is an expert on presidential and legislative politics, elections and voting behavior, and public opinion and polling.

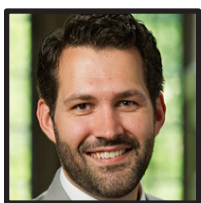
New Haven



JACOB S. HACKER

Stanley B. Resor Professor of Political Science and Director, Yale University

Hacker's research has examined health care reform and issues of redistribution in taxation and social policy.



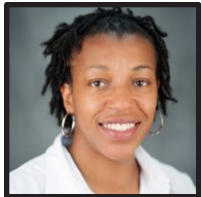
DOUG SPENCER

Associate Professor of Law and Public Policy, University of Connecticut

Spencer's research interests include the empirical study of public law, campaign finance, voting rights, and election administration.

REGIONAL NETWORK REPRESENTATIVES

New Jersey



BRANDI BLESSETT

Assistant Professor of Public Policy and Administration, Rutgers University-Camden
@Urban_Rambl

Blessett's research examines the role of public administrators as either facilitators or inhibitors of fairness, equity, and justice for historically marginalized groups.

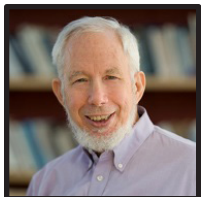


LORI MINNITE

Associate Professor of Public Policy, Rutgers University-Camden

Minnite's research focuses on issues of inequality, political participation, immigration, and U.S. urban policies and poverty programs.

New Mexico



PETER EVANS

Professor Emeritus of Sociology, University of California at Berkeley

Evans's research compares government policies to promote industrial development and improve health and education around the world.

New Orleans



J. CELESTE LAY

Associate Professor of Political Science, Tulane University
@jcelestelay

Lay studies political socialization, voting behavior and education policy in the United States.



CAROL ANN MACGREGOR

Assistant Professor of Sociology, Loyola University New Orleans
@drmacgregor

MacGregor's work focuses on changes in the American religious landscape, including declining religious affiliation, and the potential consequences of these changes for other social institutions such as civic associations.

REGIONAL NETWORK REPRESENTATIVES

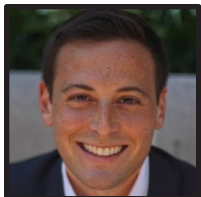
New York City



HEATH BROWN

Assistant Professor of Public Management, City University of New York
@heathbrown

Brown's work examines interest group politics and the role of non-profit organizations in politics and public policymaking.



ALEX HERTEL-FERNANDEZ

Assistant Professor of International and Public Affairs, Columbia University
@awh

Hertel-Fernandez studies the political economy of the U.S. with an emphasis on the politics of organized interests and public policy.

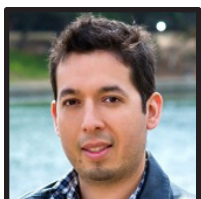


RUTH MILKMAN

Professor of Sociology, City University of New York

Milkman is a sociologist of labor and labor movements who has written on a variety of topics involving work and organized labor in the United States, past and present.

Northwest



RENÉ FLORES

Assistant Professor of Sociology and Social Policy, University of Washington

Flores' primary research interests are in the fields of international migration, race and ethnicity, and social stratification.



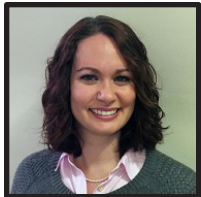
HEDY LEE

Assistant Professor of Sociology, University of Washington
@hedwig_lee

Lee's research and teaching focuses on the social determinants and consequences of population health and health disparities, with a particular focus on race/ethnicity, poverty and stress.

REGIONAL NETWORK REPRESENTATIVES

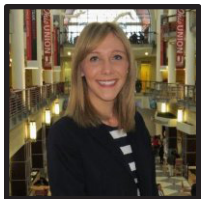
Ohio



MEGAN HATCH

Assistant Professor of Urban Policy and City Management, Cleveland State University
@meganehatch

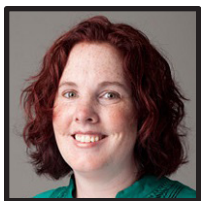
Hatch's research explores the causes and consequences of social policies that disproportionately affect vulnerable populations.



SARAH PERRY

MPH Student in Epidemiology, SSN Grad Fellow 2016-17, Ohio State University

Perry aims to increase the quality of life for individuals in impoverished and underserved populations through health care initiatives.

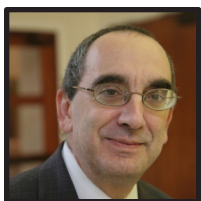


J. ROSIE TIGHE

Assistant Professor of Urban Planning, Maxine Levin College of Urban Affairs at Cleveland State University

Tighe's research focuses on housing policy, race and ethnicity, and neighborhood revitalization.

Oklahoma



DAVID BLATT

Director, Oklahoma Policy Institute
@dblattok

Blatt's research has spanned topics ranging from budget and tax policy, health care issues and social welfare, to immigration, poverty and asset building.



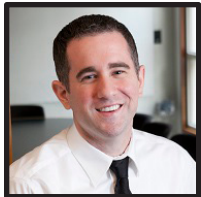
NANEIDA LAZARTE-ALCALÁ

Research Manager, Research and Statistics at the Oklahoma Department of Human Services

Lazarte-Alcalá's research focuses on the fields of early childhood education, and economic development and poverty in developing countries.

REGIONAL NETWORK REPRESENTATIVES

Research Triangle



NICK CARNES

Assistant Professor of Public Policy, Duke University
@Nick_Carnes_

Carnes's research focuses on Congress, state and local legislatures, with a special focus on representation and political accountability, and the influence of legislators' backgrounds on economic policy and inequalities of social class.



DEONDRA ROSE

Assistant Professor of Public Policy, Sanford School of Public Policy at Duke University
@DeondraRose

Rose's research focuses on the impact that federal social policies have on equality in the United States.

Sacramento

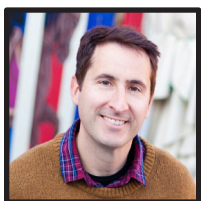


ETHAN EVANS

PhD in Sociology, University of California-Davis

Evans' research focuses on assessing access to primary care for California's expanded Medi-Cal population, exploring health access disparities for children of immigrants, state policy effects on access improvement, and the impact of family instability on decisions to seek formal medical care across the life course.

San Diego

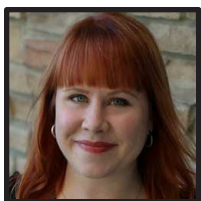


JOHN SKRENTNY

Professor of Sociology, University of California at San Diego
@johnskrentny

Skrentny is an expert in political and legal issues regarding immigration, civil rights, jobs and equal opportunity.

Tampa



HEIDE CASTAÑEDA

Associate Professor of Anthropology, University of South Florida
@CastanedaHeide

Castañeda's areas of expertise include migrant health, constructions of citizenship, and how policy and legal institutions shape everyday experiences in immigrant communities.

REGIONAL NETWORK REPRESENTATIVES

Tennessee

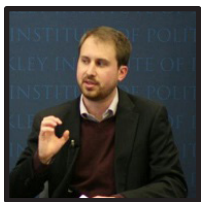


CAROLYN HEINRICH

Professor of Public Policy, Vanderbilt University
@CJ_Heinrich

Heinrich's research focuses on education and social welfare policy, public management and performance management, and social program evaluation.

Utah



JIM CURRY

Assistant Professor of Political Science, University of Utah

Curry studies the influence of parties and leaders within the U.S. Congress, and the way information and expertise shape congressional policymaking.

WORKING GROUP REPRESENTATIVES

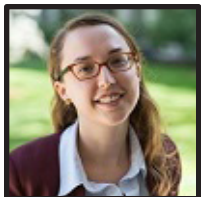
Energy and Climate



MATTO MILDENBERGER

Assistant Professor of Political Science, University of California at Santa Barbara

Mildemberger's research focuses on climate policy inaction in the face of dramatic economic and social costs associated with the climate crisis.

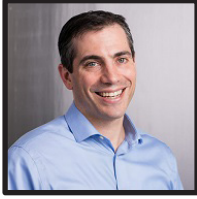


LEAH STOKES

Assistant Professor of Political Science, University of California at Santa Barbara
@leahstokes

Stokes researches public policy and environmental politics, with a focus on environmental and energy policies in the United States and Canada.

STAFF



AVI GREEN
Executive Director



HANNAH REUTER
*Associate Director of
Public Policy*



LIZZY GHEDI-EHRLICH
*Director of Policy for
Women's Health and
Equality*



BEN MIYAMOTO
Development Officer



PAO MAYNARD-MOLL
*Director of Policy and
Organizing*



DOMINIK DOEMER
*Communications
Associate*



SHIRA RASCOE
*Director of
Communications*



LYRA DE CASTRO
Organizing Fellow



ADRIANA MENDOZA
*Associate Director of
Communications*